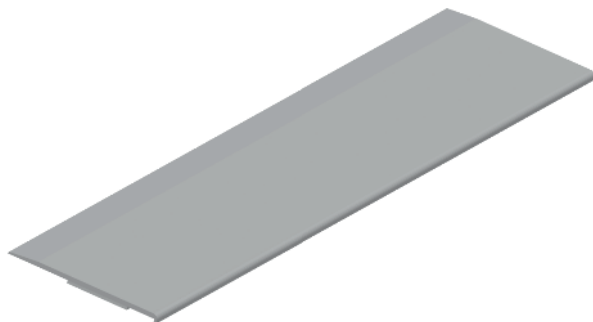


flat window profile



- utilization on "dry" window replacement
- time saving during finishing works
- aesthetic covering of PUR foam filled between the window frame and wall (stucco)
- adhesion of the soft plastic co-extrusion to the plaster
- elimination of penetrating of humidity and pollution

| Material | Dimension | Ordering No. | Length | Packing |
|----------|-----------|--------------|--------|---------|
| | mm | | m | ks |
| PVC | 30 | A/07 | 2,4 | 50 |
| PVC | 40 | A/08 | 2,4 | 50 |
| PVC | 50 | A/09 | 2,4 | 50 |

Recommendation:

For a firm connection, the base has to be dry, even, free of adhered pollution, dust and grease. The corner connection may be solved by cutting to a bevel or by using of the corner connecting. The co-extruded part is chemically stable. Application temperature (the temperature of the window frame, window molding and surrounding) must not be lower than 5°C. At low temperatures and strong winds, there must be counted with a lower starting glairiness and a longer time for the reaction of the adhesive with the window frame.

Storage:

A horizontal storage position is recommended. The profiles need to be stored in a dry place, the temperature range of -5°C to +40°C. The profiles need to be stored in a dry and annealed place. Maximum recommended storage time is 18 months.