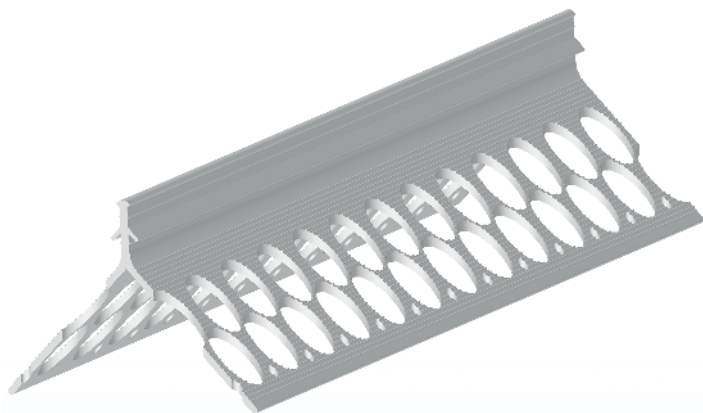


# corner bead for outside plastering



- used for protection, stabilization and accurate edges making
- the profile is set to the edge and fixed accordingly in respect to the plaster thickness
- used especially for wet plasters
- resistant against chemical agents contained in plasters

Material	Dimension	Ordering No.	Length	Packing
	mm		m	pcs
PVC	6	D/23	2,5	20
PVC	8	D/22	2,5	20
PVC	10	D/24	2,5	20

## Recommendation:

Apply the corner bead with round edge on extremely exposed places.

## Storage:

A horizontal storage position is recommended. The profiles need to be stored in a dry place. Maximum recommended storage time is 24 months.