



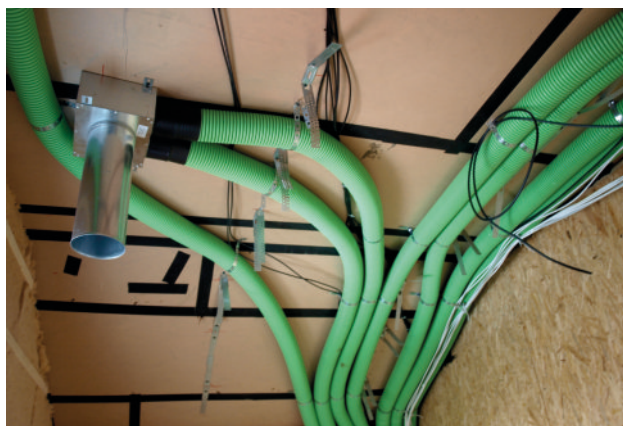
**Ducts and accessories
for air-distribution systems**



Project design and execution of construction work including HRV



Opava - Vávrovice



Opava - Jaktář



Opava - Vávrovice



Opava - Stěbořice



KLIMAFLEX SB

Flexible plastic ducts for air-distribution systems

KLIMAFLEX SB flexible plastic ducts are designed for air ducts, air-distribution equipment and heat recovery systems. The inner walls of the ducts are treated with a protective antibacterial and antifungal coating, which ensures hygienic protection against bacteria and mould. The ends of the rolls are fitted with caps to prevent dirt from getting into the ducts.

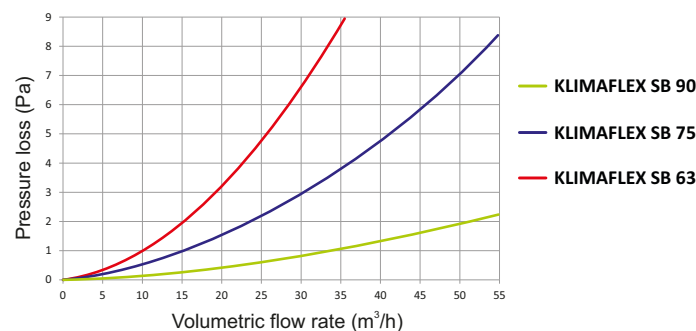
The design and properties of KLIMAFLEX SB flexible plastic ducts assure perfect transport of air and low pressure losses.

The ducts are designed in accordance with ČSN EN 17192. They are tested pursuant to ČSN EN ISO 846:98, methods A,C.

outer diameter	inner diameter	bend radius	roll length
mm	mm	m	m
63	51	0,26	50
75	62	0,29	50
90	75	0,33	50
160*	136	0,43	25
200*	171	0,50	25

* Production on order (delivery time and quantity to be agreed)

Pressure loss diagram / 1m



Material

- Outer wall made from PE.
- Inner wall made from PE + antibacterial and antifungal additive.

Ducts colours

- Outer wall - blue, green or white.
- Inner wall - white.

Temperature resistance

- Installation temperature: of -5 °C to +50 °C.
- Operation temperature: of -20 °C to +50 °C.
- Storage temperature: of -40 °C to +60 °C.

Handling

- The low weight of KLIMAFLEX SB flexible plastic ducts makes them easy to transport and simple to install.
- Protect the ends of pipes against dust and dirt by fitting end caps after installation and before starting operation.

Transport

- When loading and unloading the pipes it is essential to prevent any mechanical damage or distortion of the plastic ducts.

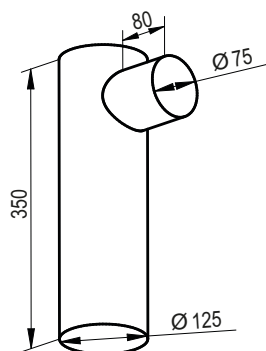
Storage

- Rolls must be stored in a horizontal position and only for the shortest time necessary, maximum 3 months.
- The ducts must be kept out of direct sunlight.





KL0Z-1x75/125-OC Pass-through ceiling / Wall box for DN 125 air valve



Material: galvanised steel

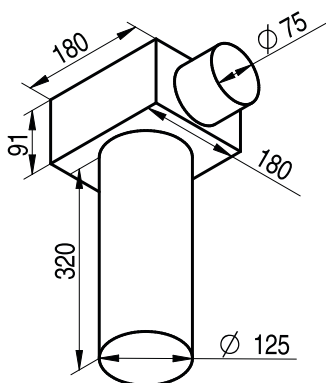
Supplied components:

- DN 125 plug
- safeguards against movement of the flexible piping
- 1 DN 75 sealing ring

Airflow speed m/s	2	2,5	3
Volume m³/h (1x75)	21	26	32



KL0-1x75/125-OC Pass-through ceiling / Wall box for DN 125 air valve



Material: galvanised steel

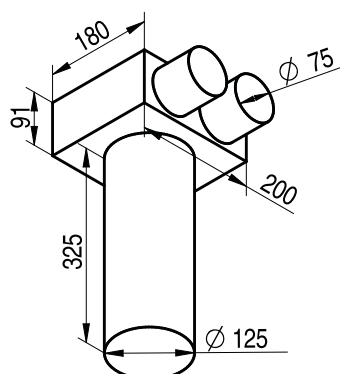
Supplied components:

- DN 125 plug
- installation fixtures
- safeguards against movement of the flexible piping
- 1 DN 75 sealing ring

Airflow speed m/s	2	2,5	3
Objem m³/h (1x75)	21	26	32



KL0-2x75/125-OC Pass-through ceiling / Wall box for DN 125 air valve



Material: galvanised steel

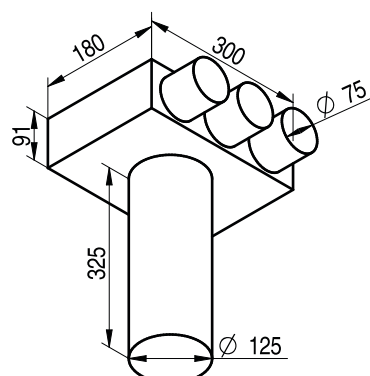
Supplied components:

- DN 125 plug
- installation fixtures
- safeguards against movement of the flexible piping
- 2 DN 75 sealing rings

Airflow speed m/s	2	2,5	3
Volume m³/h (1x75)	21	26	32
Volume m³/h (2x75)	42	52	64



KL0-3x75/125-OC Pass-through ceiling / Wall box for DN 125 air valve



Material: galvanised steel

Supplied components:

- DN 125 plug
- installation fixtures
- safeguards against movement of the flexible piping
- 3 DN 75 sealing rings

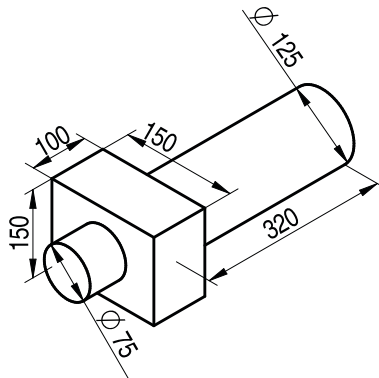
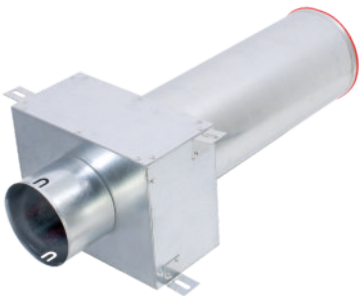
Airflow speed m/s	2	2,5	3
Volume m³/h (1x75)	21	26	32
Volume m³/h (2x75)	42	52	64
Volume m³/h (3x75)	63	78	96

TM-125 Sealing collar



For metal and plastic
 \varnothing 110 - 140 mm outlet vents
 Weather, UV resistant, ozone
 Material: EPDM
 Colour: black

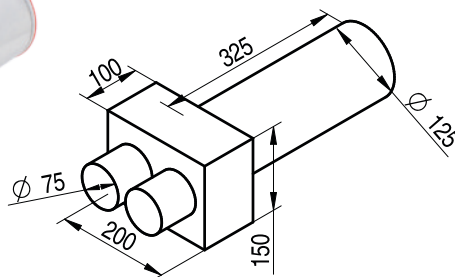
KL0-1x75/P-125-OC Pass-through flat ceiling / Wall box for DN 125 air valve



Material: galvanised steel
 Supplied components:
 • DN 125 plug
 • installation fixtures
 • safeguards against movement of the flexible piping
 • 1 DN 75 sealing ring

Airflow speed m/s	2	2,5	3
Volume m ³ /h (1x75)	21	26	32

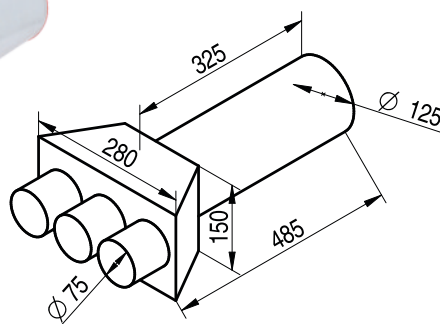
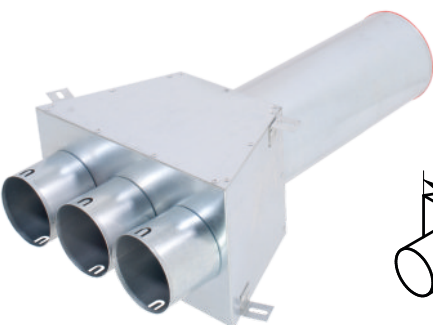
KL0-2x75/P-125-OC Pass-through flat ceiling / Wall box for DN 125 air valve



Material: galvanised steel
 Supplied components:
 • DN 125 plug
 • installation fixtures
 • safeguards against movement of the flexible piping
 • 2 DN 75 sealing rings

Airflow speed m/s	2	2,5	3
Volume m ³ /h (1x75)	21	26	32
Volume m ³ /h (2x75)	42	52	64

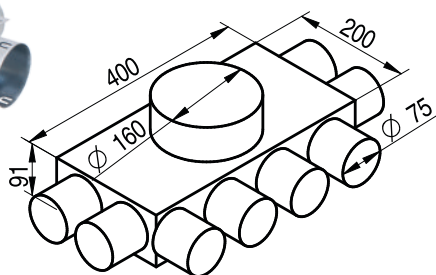
KL0-3x75/P-125-OC Pass-through flat ceiling / Wall box for DN 125 air valve



Material: galvanised steel
 Supplied components:
 • DN 125 plug
 • installation fixtures
 • safeguards against movement of the flexible piping
 • 3 DN 75 sealing rings

Airflow speed m/s	2	2,5	3
Volume m ³ /h (1x75)	21	26	32
Volume m ³ /h (2x75)	42	52	64
Volume m ³ /h (3x75)	63	78	96

KL-8x75/160-0C Flat distribution box



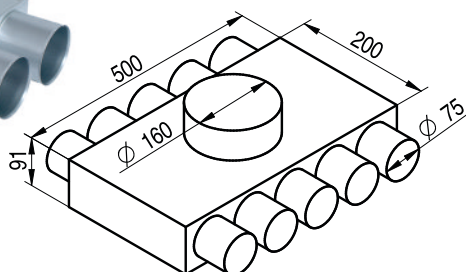
Material: galvanised steel

Supplied components:

- DN 160 seal O -ring
- installation fixtures
- safeguards against movement of the flexible piping
- 8 DN 75 sealing rings
- interior box insulation*

Airflow speed m/s	2	2,5	3
Volume m³/h (8x75)	168	208	256

KL-10x75/160-0C Flat distribution box



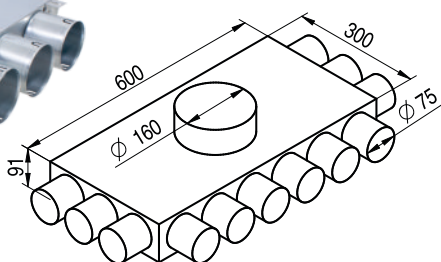
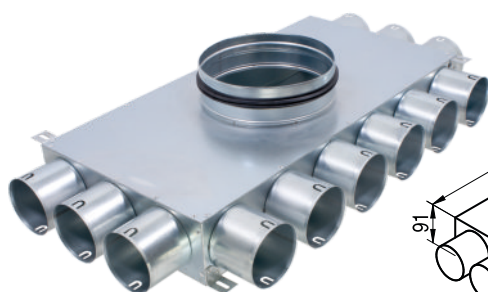
Material: galvanised steel

Supplied components:

- DN 160 seal O -ring
- installation fixtures
- safeguards against movement of the flexible piping
- 10 DN 75 sealing rings
- interior box insulation*

Airflow speed m/s	2	2,5	3
Volume m³/h (10x75)	210	260	320

KL-12x75/160-0C Flat distribution box



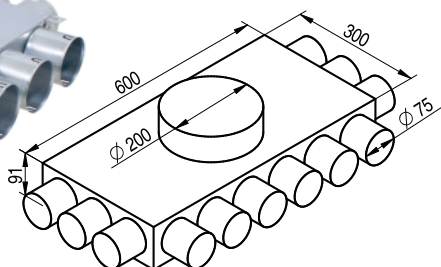
Material: galvanised steel

Supplied components:

- DN 160 seal O -ring
- installation fixtures
- safeguards against movement of the flexible piping
- 12 DN 75 sealing rings
- interior box insulation*

Airflow speed m/s	2	2,5	3
Volume m³/h (12x75)	252	312	384

KL-12x75/200-0C Flat distribution box



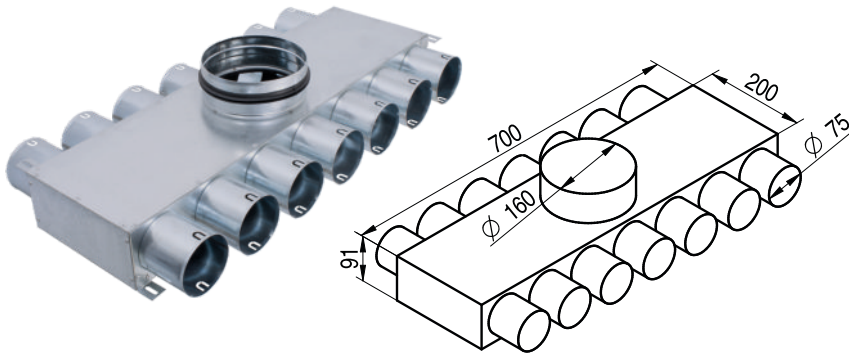
Material: galvanised steel

Supplied components:

- DN 200 seal O -ring
- installation fixtures
- safeguards against movement of the flexible piping
- 12 DN 75 sealing rings
- interior box insulation*

Airflow speed m/s	2	2,5	3
Volume m³/h (12x75)	252	312	384

KL-14x75/160-OC Flat distribution box



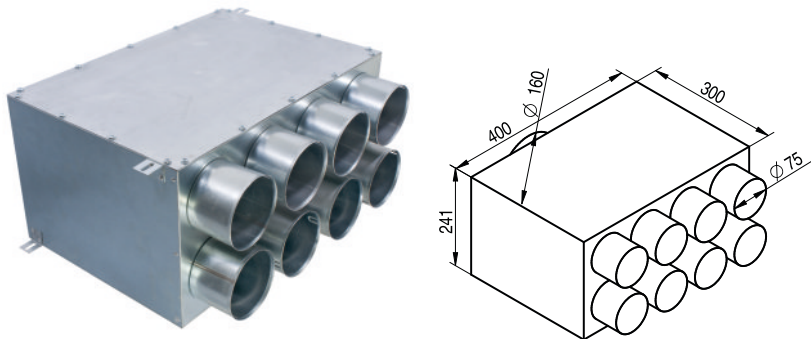
Material: galvanised steel

Supplied components:

- DN 160 seal O -ring
- installation fixtures
- safeguards against movement of the flexible piping
- 14 DN 75 sealing rings
- interior box insulation*

Airflow speed m/s	2	2,5	3
Volume m³/h (14x75)	294	364	448

RT2R-8x75/160-OC Direct distribution box



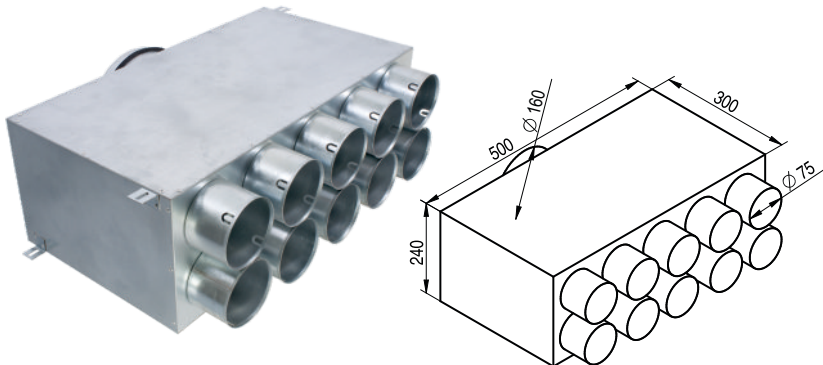
Material: galvanised steel

Supplied components:

- DN 160 seal O -ring
- installation fixtures
- safeguards against movement of the flexible piping
- 8 DN 75 sealing rings
- interior box insulation*
- inspection hatch

Airflow speed m/s	2	2,5	3
Volume m³/h (8x75)	168	208	256

RT2R-10x75/160-OC Direct distribution box



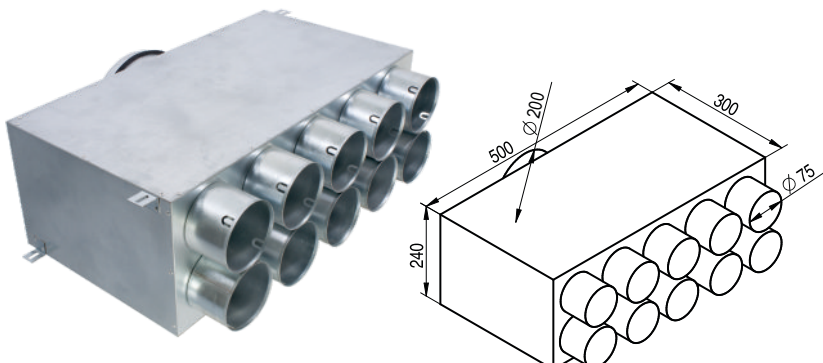
Material: galvanised steel

Supplied components:

- DN 160 seal O -ring
- installation fixtures
- safeguards against movement of the flexible piping
- 10 DN 75 sealing rings
- interior box insulation*
- inspection hatch

Airflow speed m/s	2	2,5	3
Volume m³/h (10x75)	210	260	320

RT2R-10x75/200-OC Direct distribution box



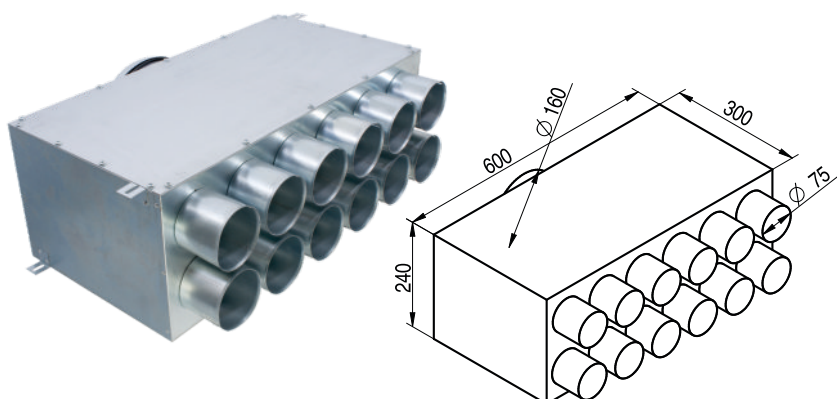
Supplied components:

- DN 200 seal O -ring
- installation fixtures
- safeguards against movement of the flexible piping
- 10 DN 75 sealing rings
- interior box insulation*
- inspection hatch

Airflow speed m/s	2	2,5	3
Volume m³/h (10x75)	210	260	320

* hygienical

RT2R-12x75/160-OC Direct distribution box



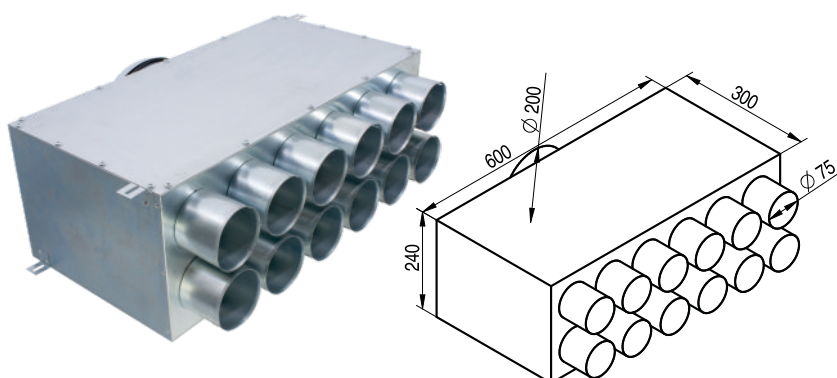
Material: galvanised steel

Supplied components:

- DN 160 seal O -ring
- installation fixtures
- safeguards against movement of the flexible piping
- 12 DN 75 sealing rings
- interior box insulation*
- inspection hatch

Airflow speed m/s	2	2,5	3
Volume m³/h (12x75)	252	312	384

RT2R-12x75/200-OC Direct distribution box



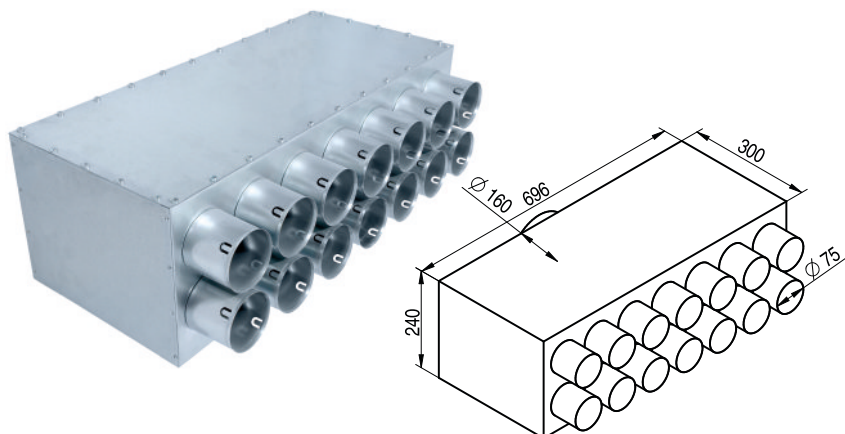
Material: galvanised steel

Supplied components:

- DN 200 seal O -ring
- installation fixtures
- safeguards against movement of the flexible piping
- 12 DN 75 sealing rings
- interior box insulation*
- inspection hatch

Airflow speed m/s	2	2,5	3
Volume m³/h (12x75)	252	312	384

RT2R-14x75/160-OC Direct distribution box



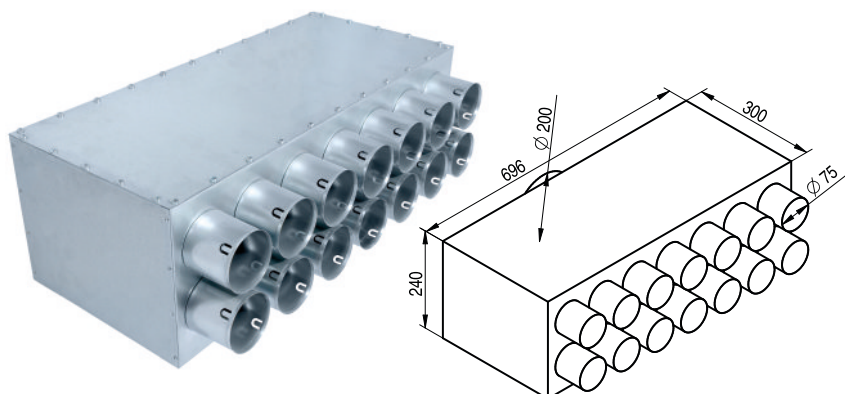
Material: galvanised steel

Supplied components:

- DN 160 seal O -ring
- installation fixtures
- safeguards against movement of the flexible piping
- 14 DN 75 sealing rings
- interior box insulation*
- inspection hatch

Airflow speed m/s	2	2,5	3
Volume m³/h (14x75)	294	364	448

RT2R-14x75/200-OC Direct distribution box



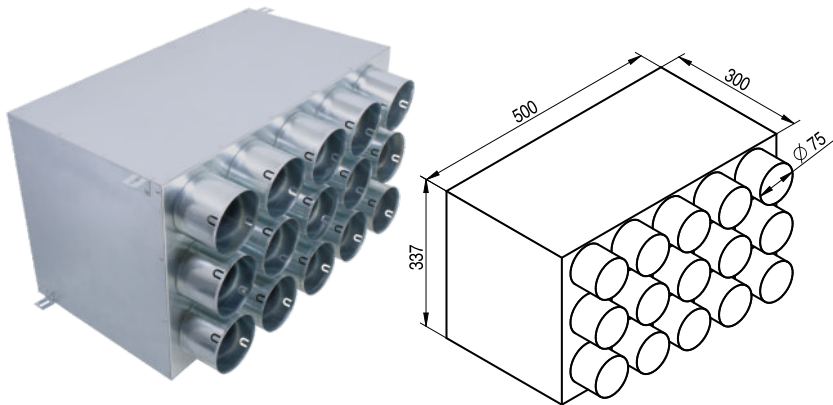
Material: galvanised steel

Supplied components:

- DN 200 seal O -ring
- installation fixtures
- safeguards against movement of the flexible piping
- 14 DN 75 sealing rings
- interior box insulation*
- inspection hatch

Airflow speed m/s	2	2,5	3
Volume m³/h (14x75)	294	364	448

RT3R-15x75/200-OC Direct distribution box



Material: galvanised steel

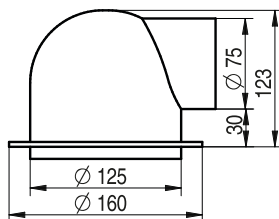
Supplied components:

- DN 200 seal O -ring
- installation fixtures
- safeguards against movement of the flexible piping
- 15 DN 75 sealing rings
- interior box insulation*
- inspection hatch

Airflow speed m/s	2	2,5	3
Volume m ³ /h (15x75)	312	390	480

* hygienical

SV-75/125 Plastic ceiling/Wall outlet



For installation on plasterboard with vapour barrier

Input for DN 75 flexible piping

Output for DN 125 table valve

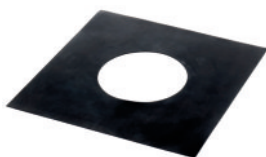
Material: PP

Colours may differ

Supplied components:

- installation screws
- DN 75 seal O -ring
- DN 125 cap
- locking pin

TM-125 Sealing collar



For metal and plastic

Ø 110 - 140 mm outlet vents

Weather, UV resistant, ozone

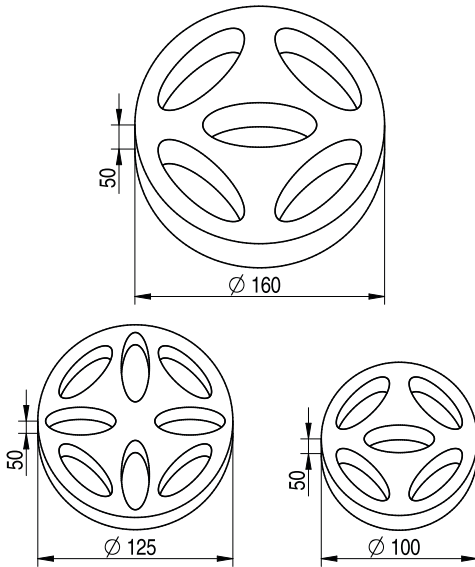
Material: EPDM

Colour: black

RP Flow-through regulator with damper

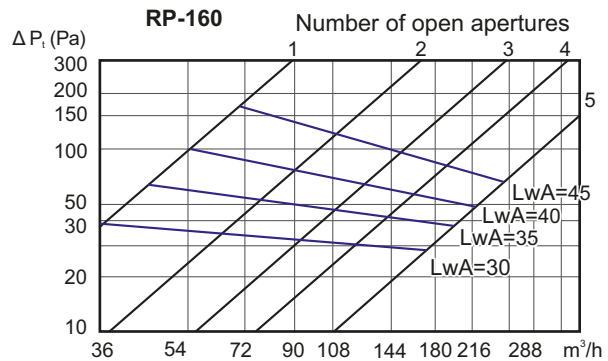
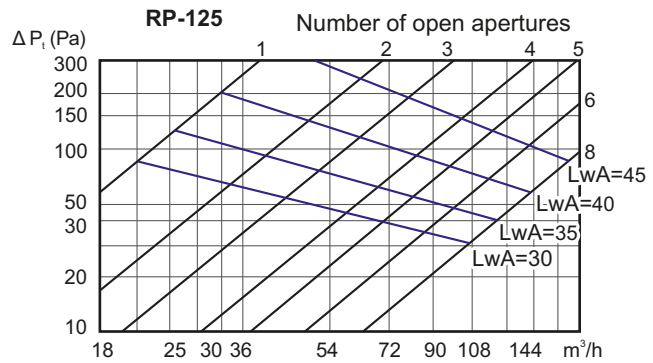
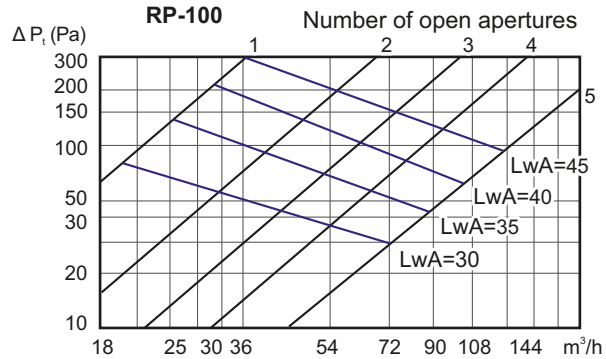


Special damping foam
The air flow-through is regulated by means of the number of open apertures

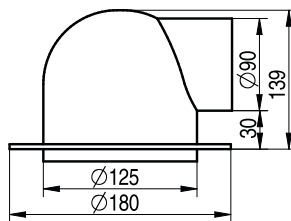


Damping of dB in frequency band (Hz)

Type	Number of open apertures	63 Hz	125 Hz	250 Hz	500 Hz	1 kHz	2 kHz	4 kHz	8 kHz
RP-100	1	6,5	7	4	9,5	13	16	18	22
	3	3	3,5	2,5	5,5	8,5	8,5	15	19
	5	1,5	2,5	1,5	3,5	6	6,5	12	17
RP-125	2	5,5	6,5	7	6,5	10	15	19	21
	5	2	2	2,5	3	8,5	8	14	19
	8	1	1,5	1,5	2,5	6	6	11	18
RP-160	1	6,5	7	4	9,5	13	16	18	22
	3	2,8	3,5	2,5	5,8	8,5	8,7	14,5	19
	5	3	3,5	2,5	5,5	8,5	8,5	15	20



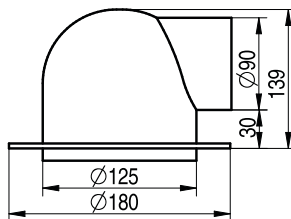
SV-90/125 Plastic ceiling/Wall outlet



For installation on plasterboard with vapour barrier
Input for DN 90 flexible piping
Output for DN 125 table valve
Material: PP
Colours may differ
Supplied components:
• installation screws
• DN 90 seal O -ring
• DN 125 cap
• locking pin



SVV-90/125 Plastic ceiling / Wall outlet



For installation on plasterboard with vapour barrier
Input for DN 90 flexible piping
Output for DN 125 table valve

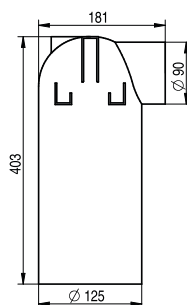
Material: PP

Supplied components:

- installation screws
- DN 90 seal O-ring
- DN 125 cap



SVD-90/125 Plastic ceiling / Wall outlet long



For installation on plasterboard with vapour barrier

Input for DN 90 flexible piping

Output for DN 125 table valve

Material: PP

Supplied components:

- installation screws
- DN 90 seal O-ring
- DN 125 cap
- 2 locking pins



TM-125 Sealing collar

For metal and plastic

Ø 110-140 mm outlet vents

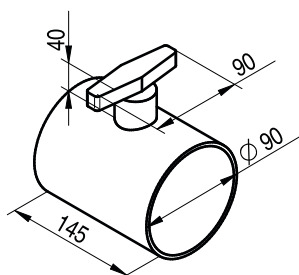
Weather, UV resistant, ozone

Material: EPDM

Colour: black



RK-90 Airflow damper DN 90



For manually regulating the volume of air in the air-conditioning route

Inlet and outlet intended for

KLIMAFLEX SB 90 mm pipes

Secure the pipe in the flap using

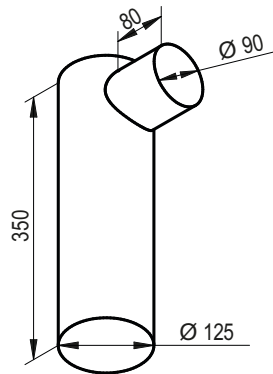
air-tight tape

Material: PP

Parts:

- locking nut for securing the position of the reducing valve

KLOZ-1x90/125-OC Pass-through ceiling / Wall box for DN 125 air valve



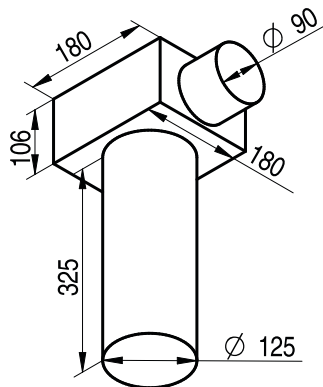
Material: galvanised steel

Supplied components:

- DN 125 plug
- safeguards against movement of the flexible piping
- 1 DN 90 sealing ring

Airflow speed m/s	2	2,5	3
Volume m³/h (1x90)	32	40	48

KLO-1x90/125-OC Pass-through ceiling / Wall box for DN 125 air valve



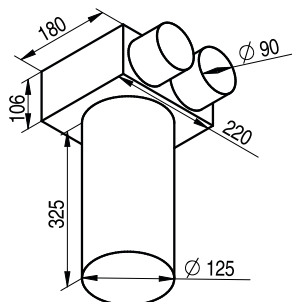
Material: galvanised steel

Supplied components:

- DN 125 plug
- safeguards against movement of the flexible piping
- installation fixtures
- 1 DN 90 sealing ring

Airflow speed m/s	2	2,5	3
Volume m³/h (1x90)	32	40	48

KLO-2x90/125-OC Pass-through ceiling / Wall box for DN 125 air valve



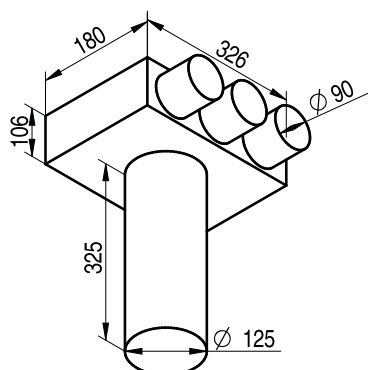
Material: galvanised steel

Supplied components:

- DN 125 plug
- safeguards against movement of the flexible piping
- installation fixtures
- 2 DN 90 sealing rings

Airflow speed m/s	2	2,5	3
Volume m³/h (1x90)	32	40	48
Volume m³/h (2x90)	64	80	96

KLO-3x90/125-OC Pass-through ceiling / Wall box for DN 125 air valve



Material: galvanised steel

Supplied components:

- DN 125 plug
- safeguards against movement of the flexible piping
- installation fixtures
- 3 DN 90 sealing rings

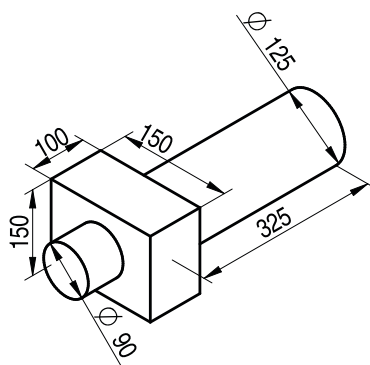
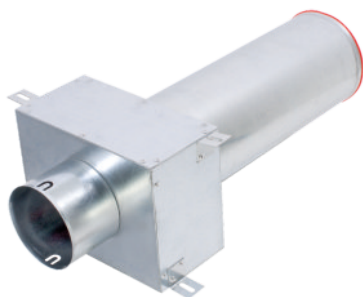
Airflow speed m/s	2	2,5	3
Volume m³/h (1x90)	32	40	48
Volume m³/h (2x90)	64	80	96
Volume m³/h (3x90)	96	120	144

TM-125 Sealing collar



For metal and plastic
Ø 110-140 mm outlet vents
Weather, UV resistant, ozone
Material: EPDM
Colour: black

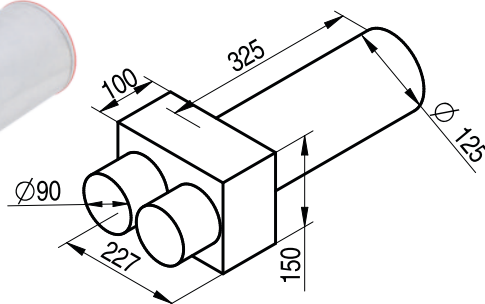
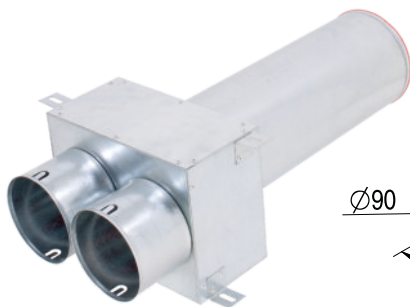
KLO-1x90/P-125-OC Pass-through flat ceiling / Wall box for DN 125 air valve



Material: galvanised steel
Supplied components:
• DN 125 plug
• safeguards against movement of the flexible piping
• installation fixtures
• 1 DN 90 sealing ring

Airflow speed m/s	2	2,5	3
Volume m³/h (1x90)	32	40	48

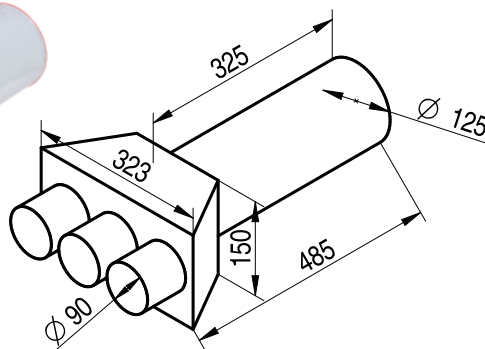
KLO-2x90/P-125-OC Pass-through flat ceiling / Wall box for DN 125 air valve



Material: galvanised steel
Supplied components:
• DN 125 plug
• safeguards against movement of the flexible piping
• installation fixtures
• 2 DN 90 sealing rings

Airflow speed m/s	2	2,5	3
Volume m³/h (1x90)	32	40	48
Volume m³/h (2x90)	64	80	96

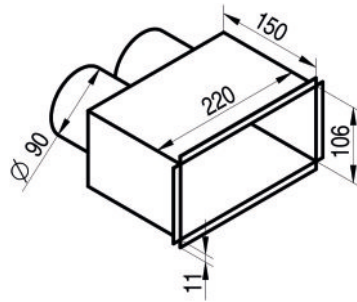
KLO-3x90/P-125-OC Pass-through flat ceiling / Wall box for DN 125 air valve



Material: galvanised steel
Supplied components:
• DN 125 plug
• safeguards against movement of the flexible piping
• installation fixtures
• 3 DN 90 sealing rings

Airflow speed m/s	2	2,5	3
Volume m³/h (1x90)	32	40	48
Volume m³/h (2x90)	64	80	96
Volume m³/h (3x90)	96	120	144

KLOQ/KR-2x90-OC Wall box



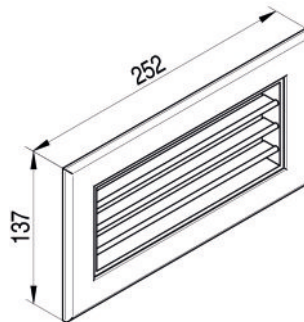
Material: galvanised steel

Supplied components:

- safeguards against movement of the flexible piping
- installation fixtures
- 2 DN 90 sealing rings
- the deflection grille is not part of the box, it **MUST** be ordered separately

Airflow speed m/s	2	2,5	3
Volume m³/h (1x90)	32	40	48
Volume m³/h (2x90)	64	80	96

AD11-220-104-C-03 Deflection grille



Material: anodized aluminium

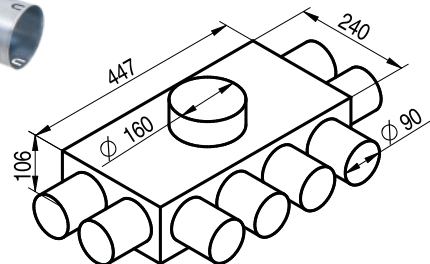
Colour: white RAL 9003

With adjustable blades, the grille is very useful for air supply and can be adapted to the required throw and air spread pattern

Supplied components:

- 4 adjustable clips

KL-8x90/160-OC Flat distribution box



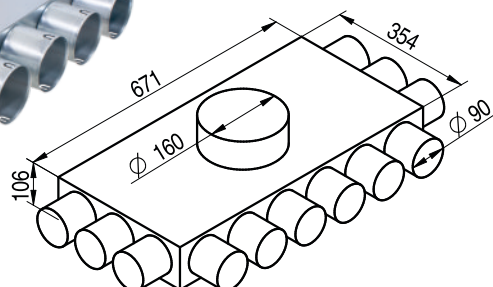
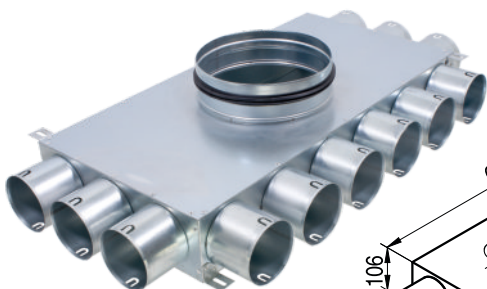
Material: galvanised steel

Supplied components:

- DN 160 seal O -ring
- installation fixtures
- safeguards against movement of the flexible piping
- 8 DN 90 sealing rings
- interior box insulation*

Airflow speed m/s	2	2,5	3
Volume m³/h (8x90)	256	320	384

KL-12x90/160-OC Flat distribution box



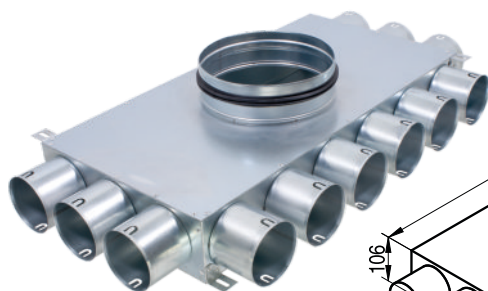
Material: galvanised steel

Supplied components:

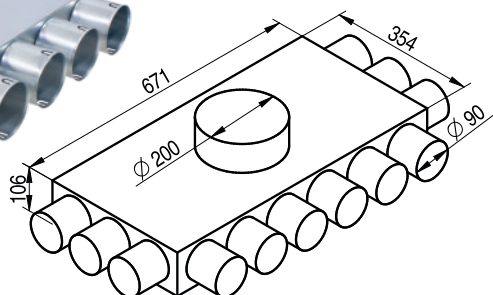
- DN 160 seal O -ring
- installation fixtures
- safeguards against movement of the flexible piping
- 12 DN 90 sealing rings
- interior box insulation*

Airflow speed m/s	2	2,5	3
Volume m³/h (12x90)	384	480	576

* hygienical



KL-12x90/200-OC Flat distribution box

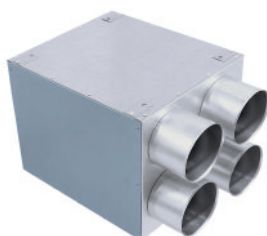


Material: galvanised steel

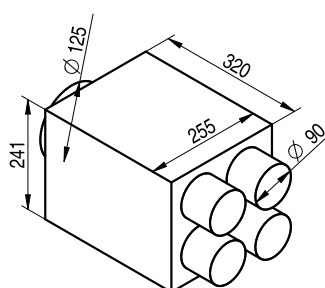
Supplied components:

- DN 200 seal O -ring
- installation fixtures
- safeguards against movement of the flexible piping
- 12 DN 90 sealing rings
- interior box insulation*

Airflow speed m/s	2	2,5	3
Volume m ³ /h (12x90)	384	480	576



RT2R-4x90/125-OC Direct distribution box

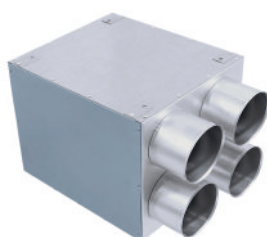


Material: galvanised steel

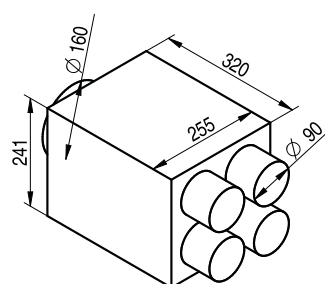
Supplied components:

- DN 125 seal O -ring
- installation fixtures
- safeguards against movement of the flexible piping
- 4 DN 90 sealing rings
- interior box insulation*
- inspection hatch

Airflow speed m/s	2	2,5	3
Volume m ³ /h (4x90)	255	320	241



RT2R-4x90/160-OC Direct distribution box

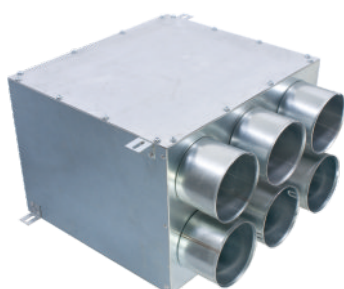


Material: galvanised steel

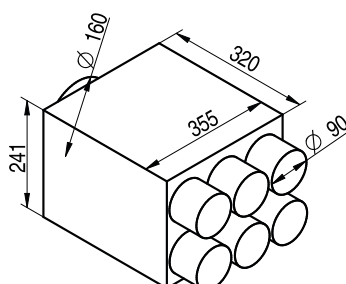
Supplied components:

- DN 160 seal O -ring
- installation fixtures
- safeguards against movement of the flexible piping
- 4 DN 90 sealing rings
- interior box insulation*
- inspection hatch

Airflow speed m/s	2	2,5	3
Volume m ³ /h (4x90)	255	320	241



RT2R-6x90/160-OC Direct distribution box



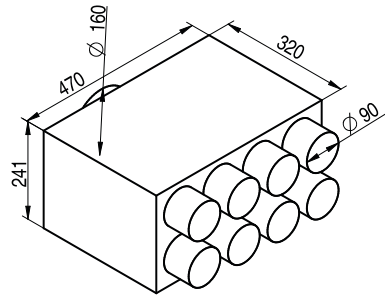
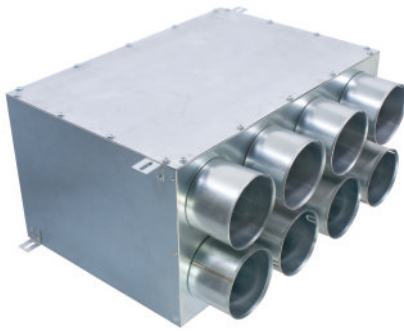
Material: galvanised steel

Supplied components:

- DN 160 seal O -ring
- installation fixtures
- safeguards against movement of the flexible piping
- 6 DN 90 sealing rings
- interior box insulation*
- inspection hatch

Airflow speed m/s	2	2,5	3
Volume m ³ /h (6x90)	192	240	288

RT2R-8x90/160-OC Direct distribution box



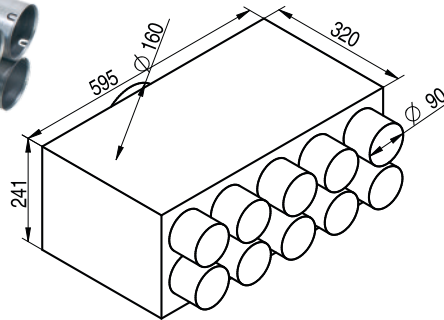
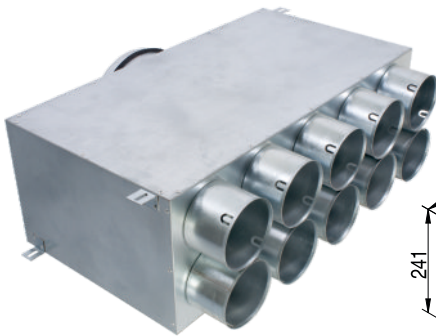
Material: galvanised steel

Supplied components:

- DN 160 seal O -ring
- installation fixtures
- safeguards against movement of the flexible piping
- 8 DN 90 sealing rings
- interior box insulation*
- inspection hatch

Airflow speed m/s	2	2,5	3
Volume m³/h (8x90)	256	320	384

RT2R-10x90/160-OC Direct distribution box



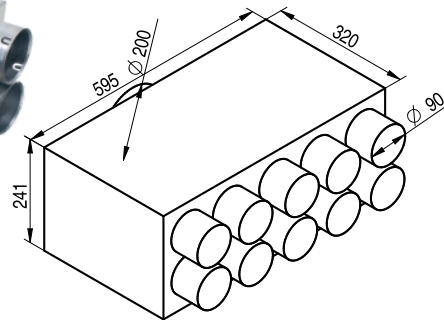
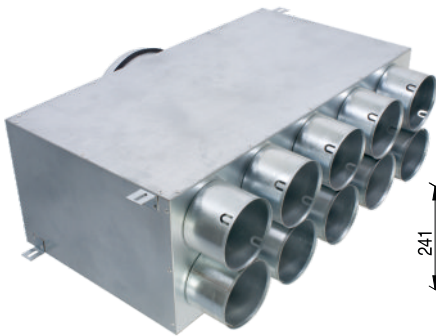
Material: galvanised steel

Supplied components:

- DN 160 seal O -ring
- installation fixtures
- safeguards against movement of the flexible piping
- 10 DN 90 sealing rings
- interior box insulation*
- inspection hatch

Airflow speed m/s	2	2,5	3
Volume m³/h (10x90)	320	400	480

RT2R-10x90/200-OC Direct distribution box



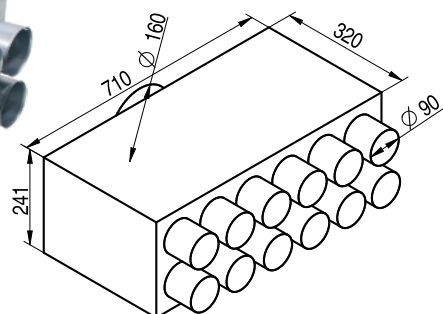
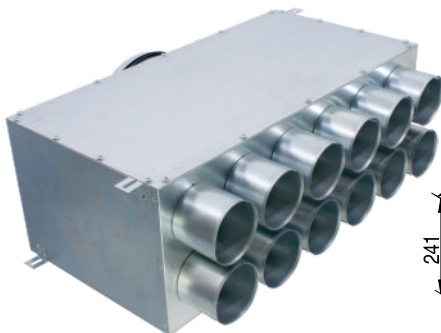
Material: galvanised steel

Supplied components:

- DN 200 seal O -ring
- installation fixtures
- safeguards against movement of the flexible piping
- 10 DN 90 sealing rings
- interior box insulation*
- inspection hatch

Airflow speed m/s	2	2,5	3
Volume m³/h (10x90)	320	400	480

RT2R-12x90/160-OC Direct distribution box



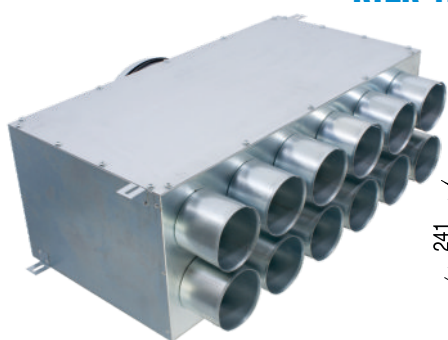
Material: galvanised steel

Supplied components:

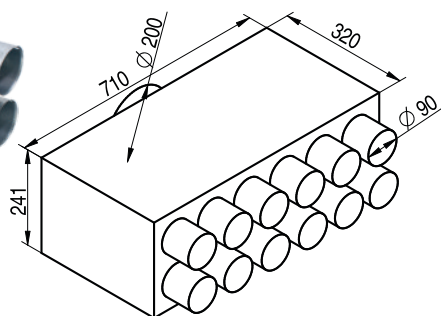
- DN 160 seal O -ring
- installation fixtures
- safeguards against movement of the flexible piping
- 12 DN 90 sealing rings
- interior box insulation*
- inspection hatch

Airflow speed m/s	2	2,5	3
Volume m³/h (12x90)	384	480	576

* hygienical



RT2R-12x90/200-0C Direct distribution box

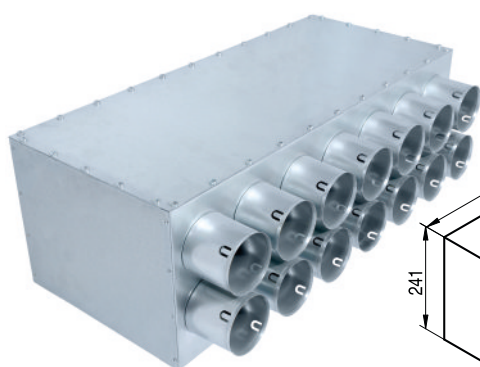


Material: galvanised steel

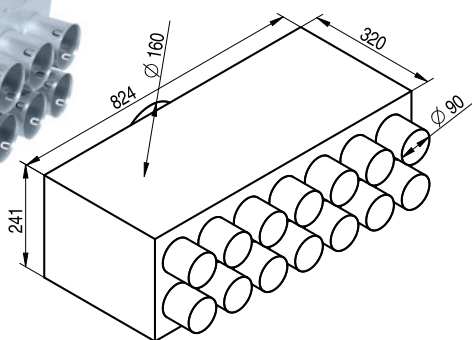
Supplied components:

- DN 200 seal O -ring
- installation fixtures
- safeguards against movement of the flexible piping
- 12 DN 90 sealing rings
- interior box insulation*
- inspection hatch

Airflow speed m/s	2	2,5	3
Volume m³/h (12x90)	384	480	576



RT2R-14x90/160-0C Direct distribution box

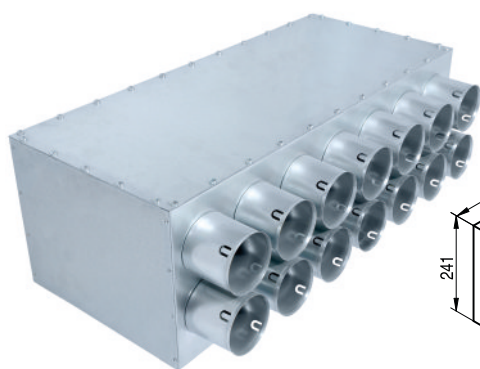


Material: galvanised steel

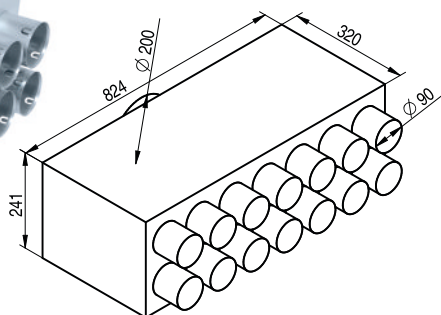
Supplied components:

- DN 160 seal O -ring
- installation fixtures
- safeguards against movement of the flexible piping
- 14 DN 90 sealing rings
- interior box insulation*
- inspection hatch

Airflow speed m/s	2	2,5	3
Volume m³/h (14x90)	448	560	672



RT2R-14x90/200-0C Direct distribution box

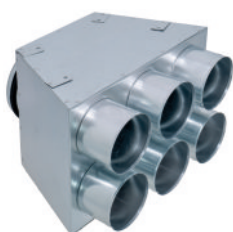


Material: galvanised steel

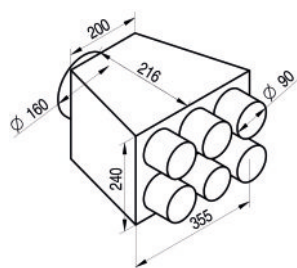
Supplied components:

- DN 200 seal O -ring
- installation fixtures
- safeguards against movement of the flexible piping
- 14 DN 90 sealing rings
- interior box insulation*
- inspection hatch

Airflow speed m/s	2	2,5	3
Volume m³/h (14x90)	448	560	672



RT2RQ-6x90/160-0C Direct distribution box



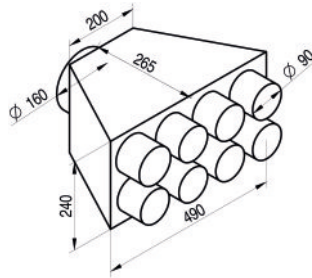
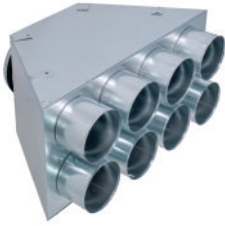
Material: galvanised steel

Supplied components:

- DN 160 seal O -ring
- installation fixtures
- safeguards against movement of the flexible piping
- 6 DN 90 sealing rings
- interior box insulation*
- inspection hatch

Rychlost proudění vzduchu m/s	2	2,5	3
Objem m³/h (6x90)	192	240	288

RT2RQ-8x90/160-OC Direct distribution box



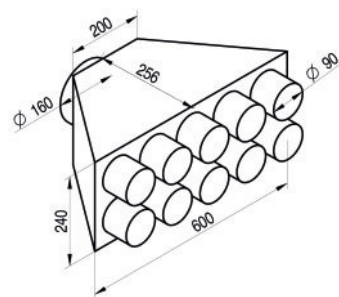
Material: galvanised steel

Supplied components:

- DN 160 seal O -ring
- installation fixtures
- safeguards against movement of the flexible piping
- 8 DN 90 sealing rings
- interior box insulation*
- inspection hatch

Airflow speed m/s	2	2,5	3
Volume m³/h (8x90)	256	320	384

RT2RQ-10x90/160-OC Direct distribution box



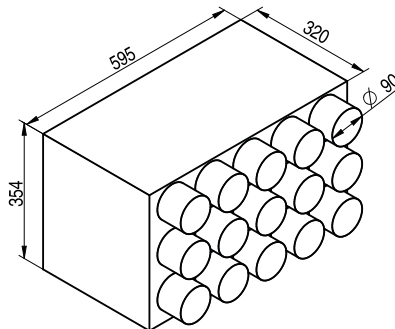
Material: galvanised steel

Supplied components:

- DN 160 seal O -ring
- installation fixtures
- safeguards against movement of the flexible piping
- 10 DN 90 sealing rings
- interior box insulation*
- inspection hatch

Airflow speed m/s	2	2,5	3
Volume m³/h (10x90)	320	400	480

RT3R-15x90/160-OC Direct distribution box



Material: galvanised steel

Supplied components:

- DN 160 seal O -ring
- installation fixtures
- safeguards against movement of the flexible piping
- 15 DN 90 sealing rings
- interior box insulation*
- inspection hatch

Airflow speed m/s	2	2,5	3
Volume m³/h (15x90)	480	600	720

MR-125 Mounting frame with rubber gasket



For easy installation of the SVV-90-125 plastic ceiling/ wall outlet and PLVE-O/125 plastic disc air (exhaust valve), or PLVE-P/125 (supply and exhaust valve). The mounting frame to be attached to a plasterboard structure. There is an attachment fitted with a rubber seal, which assures that the connection is extremely tight, around the perimeter. There are four installation apertures in the collar of the mounting frame.

Material:

- frame - galvanised steel
- seal - rubber

Diameter: 125 mm

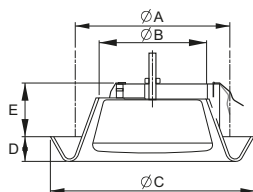
* hygienical

PLVE-O/125 Plastic disc air exhaust valve



Order code	A	B	C	D	E
	mm	mm	mm	mm	mm
PLVE-O/100*	100	70	138	20	45
PLVE-O/125	125	85	165	20	43
PLVE-O/150*	150	95	193	21	45
PLVE-O/160*	160	95	193	21	45
PLVE-O/200*	200	162	240	18	45

* Made to order



Suitable for the KLO, SV wall or ceiling box
Easy regulation of air-flow
The aerodynamic design of the valve shape reduces noise made by exhausted air
High resistance to temperature, up to 120 °C
Low weight
Clean using ordinary detergent

Material:

- valve - polypropylene (PP)
- sealing ring - polyurethane foam
- central screw, nut, compression spring - steel

Colour: white RAL 9011

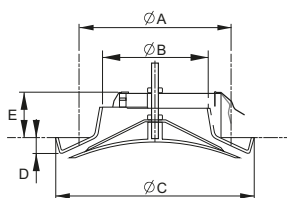
Packaging: in PE bags

PLVE-P/125 Plastic disc air supply and exhaust valve



Order code	A	B	C	D	E
	mm	mm	mm	mm	mm
PLVE-P/100*	100	74	150	17	40
PLVE-P/125	125	93	180	20	40
PLVE-P/150*	150	113	205	23	35
PLVE-P/160*	160	113	205	23	35
PLVE-P/200*	200	165	245	22	45

* Made to order



Suitable for the KLO, SV wall or ceiling box, for installation frame
Easy regulation of air-flow
The aerodynamic design of the valve shape reduces noise made by exhausted air
High resistance to temperature, up to 120 °C
Low weight
Clean using ordinary detergent

Material:

- valve - polypropylene (PP)
- sealing ring - polyurethane foam
- central screw, nut, compression spring - steel

Colour: white RAL 9011

Packaging: in PE bags

REVE/125 Disc valve with air-flow regulator



For supply and exhaust ventilation of residential rooms

- Installation into supply or exhaust ducts of a diameter of 125 mm, by insertion – without using pins, screws or other securing elements
 - Manual regulation of air-flow using a nine-position sliding regulator, which controls extension of the internal flange
- A circular cover in matt white or black



Material:

- valve - polyethylen (PE)
- cover - Ø 23 cm
0,8 mm powder-coated steel
- The set includes seals to ensure that the valve is properly seated in the duct and installation is completely tight



SKVE Design glass valve

For air intake and outflow with easy and fast airflow control

For attachment to a wall or ceiling

The valve consists:

- the body of the valve - is fitted within a system of piping by three metal springs
- the glass front plate - is attached to the body of the valve using springs

Shape: square (CT) or ring (KR)

Colours: gloss (L), matt (M)

Order code	For pipe dimensions DN	Body diameter mm	Exterior diameter mm	Body depth mm	Diameter of the valve cap mm
SKVE/100/CT or KR/L or M	100	90	137,5	54	200
SKVE/125/CT or KR/L or M	125	114	156	57	200
SKVE/160/CT or KR/L or M	160	149	191	57	230

Colours gloss



Aluminium Rich 9007

Anthracite Authentic 7016

Black Classic 9005

Brown Light 1236

Grey Metal 9006

White Pearl 1013

White Pure 9003

White Soft 9010

Colours matt



Anthracite Authentic 7016M

Beige Warm 1015M

Black Classic 9005M

Brown Light 1236M

Green Soft 8615M

Silver Clearvision 1003M

White Pure 9003M

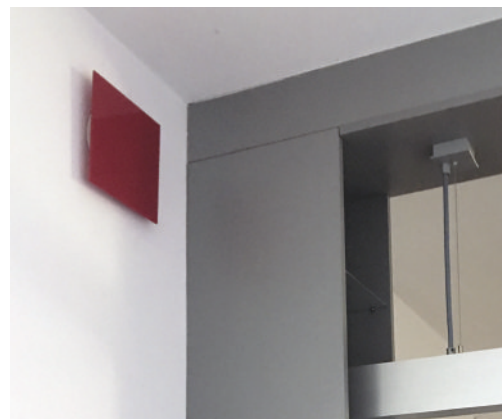
White Soft 9010M

On request:

Blue Shadow 7000, Brown Natural 7013, Red Luminous 1586, Red Terracota 8815

On request:

Silver Bronze 1002M, Brown Natural 7013M, Silver Grey 1001M, Red Terracota 8815M



New design

Concrete



Gray 2010



White 2020



Natural Light 2030



Avellino Dark 2040



Natural Dark 2050

Stone



Marble White 3010



Marble Gray Gold 3020



Marble Gray 3030



Marble Gold 3040



Travertin Natural 3050



Travertin 3060



Gray 3070

Wood



Maple Reddish 5010



Mahogany Light 5011



Acacia 5012



Walnut 5013



Red Apple Tree 5014



Maple Dark 5015



Fir 5016



Beech Natural 5017



Oak Scandinavian 5018



Oak Pearl Gray 5019



Pine 5020



Oak Natural 5021

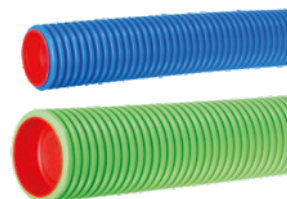
Other accessories

End cap

Material: PE-HD

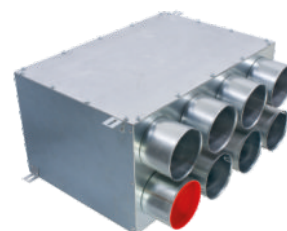
- for flexible piping

For pipe dimensions DN	75	90
Order code	ZA-75	ZA-90



- for box outlets

End cap for box DN	75	90
Order code	ZAB-75	ZAB-90



Exterior connector for connecting the flexible piping

Material: PP

For pipe dimensions DN	75	90
Order code	ZV-75	ZV-90



Sealing ring for connecting the flexible piping

Material: EPDM

- for connecting the flexible piping

For pipe dimensions DN	75	90
Order code	UV-75	UV-90



- for connecting the flexible piping to the box

For pipe dimensions DN	75	90
Order code	UVB-75	UVB-90



- for connecting the flexible piping to the plastic box

For pipe dimensions DN	75	90
Order code	UVB-75-PC	UVB-90-PC



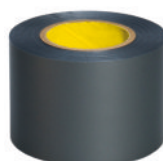
PVC self-adhesive tape

Material: PVC, synthetic rubber based adhesive sheet

Colour: grey

- min. application temperature from +10 °C, operating temperature up to +85 °C
- For joining and sealing metal and plastic piping

For joining and securing foam insulation and polyurethane insulation coated with PVC



Order code	Width mm	Length m	Thickness mm	Tensile strength N/10 mm	Elongation at break %	Adhesion to steel N/10 mm
PAL-411	50	20	0,13	20	180	2,3

Shrink-seal connectors

Heat-shrink pipe connector
For sealing connections between pipes
and boxes
Length 1000 mm
Application using a hot-air gun
Moulds to the pipe surface

For pipe dimensions DN	75	90
Order code	STS01	STS02

TM-125 Sealing collar

For metal and plastic
Ø 110-140 mm outlet vents
Weather, UV resistant, ozone
Material: EPDM
Colour: black

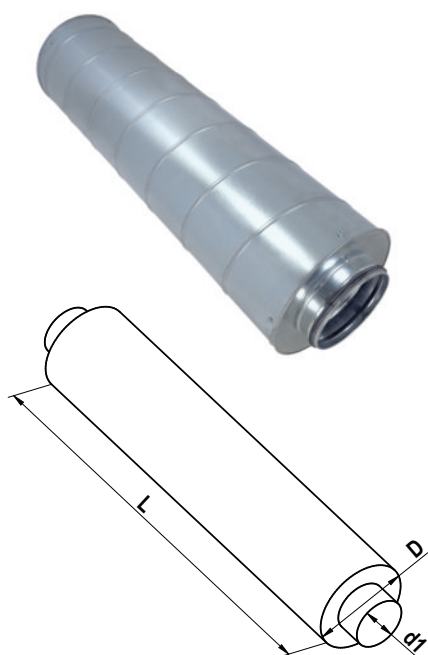


Plastic elbow

For 90° pipe installation in places where
the bend of flexible duct is not sufficient
Material: ABS

Supplied components:
• 2 DN 75 or DN 90 seling rings
• 2 locking pins

For pipe dimensions DN	75	90
Order code	KP-75	KP-90



Noise damper

Enables achievement of a significant noise damping effect in circular pipes.

Material:

- external casing galvanised metal sheet
- internal casing perforated galvanised metal sheet

Damping layer:

- mineral wool with nonwoven textile

Outlet component:

- radial shaft seal

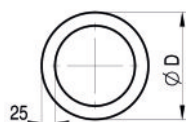
Order code	Internal diameter d1 mm	External diameter D mm	Length L* mm
TH50* 100/0200/0900/S	100	200	900
TH50* 125/0224/0900/S	125	224	900
TH50* 160/0250/0900/S	160	250	900
TH50* 200/0315/0900/S	200	315	900
TH50* 250/0355/0900/S	250	355	900

*additional dimensions on request

Damping of dB in frequency band (Hz)

f /Hz/	63	125	250	500	1k	2k	4k	8k	Di on LAeq,T /dB/ **
Order code	Di /dB/ acoustic damping effect								
TH50 0100/0200/0900/S	5	17	26	34	30	34	37	25	26,0
TH50 0125/0224/0900/S	3	13	20	32	29	35	31	21	23,0
TH50 0160/0250/0900/S	2	9	13	27	32	39	26	15	20,4
TH50 0200/0315/0900/S	3	6	12	20	24	23	15	12	14,4
TH50 0250/0355/0900/S	5	2	6	11	15	9	7	5	7,5
TH50 0315/0400/0900/S	3	1	5	12	16	14	8	5	8,0
TH50 0400/0500/0900/S	7	1	6	9	10	7	6	5	6,4

**equivalent acoustic pressure level LAeq,T in dB



THFLEXI noise damper

Substantially reduces noise in the air distribution system

Material:

- external laminated aluminium foil cladding
- internal layer made from hydrophobic nonwoven polypropylene fabric reinforced with steel wire
- insulation layer consisting of 25 mm glass fibre

Order code	External diameter D mm	Insulating layer thickness mm	Minimum bend radius mm	Length in box m	Box dimensions mm
THFLEXI 0160/10000	160	25	112	10	230x235x1000
THFLEXI 0200/10000	200	25	133	10	265x265x1000



Knife for cutting ventilation pipes

For cutting pipes of an external diameter of 75 mm (code NKF-75) or 90 mm (code NKF-90) in a straight line without leaving burrs

Easy replacement of the blade

Spare blades stored in the handle of the knife

For pipe dimensions DN	75	90
Order code	NKF-75	NKF-90

Installation of KLIMAFLEX SB pipes to KL, KLO, KLOZ and RT boxes



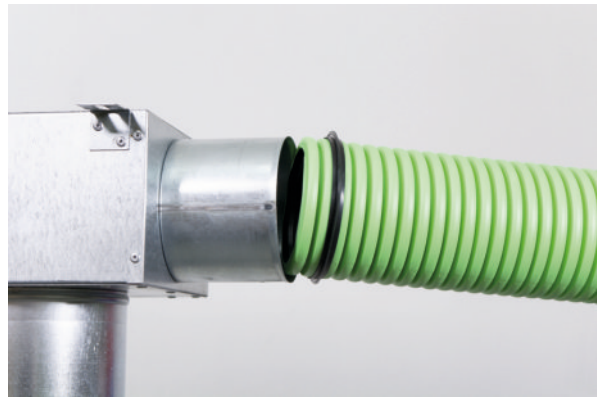
1) Cut the pipe to the required length at the groove in the corrugation.



2) Fit a sealing ring to the 2nd or 3rd groove.



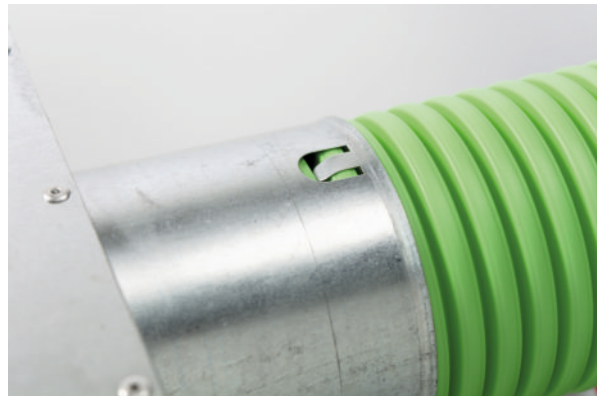
3) Apply lubricant to the interior surface of the outlet.*



4) Insert the pipe as far as it will go.



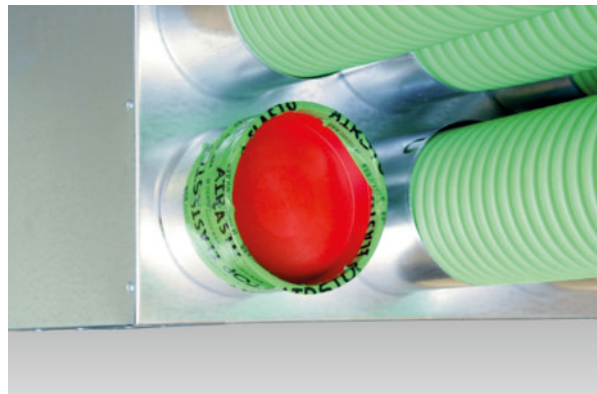
5) Press both locks to prevent the pipe from sliding out.



6) Correct lock position.



7) Secure the connection using air-tight self-adhesive tape.



8) We recommend that the end caps on unused and sealed outlets be secured using air-tight self-adhesive tape.

* E.g. washing-up liquid, silicone oil etc. Petroleum-based oils, lubricating grease and solvents **MUST NOT BE USED**.

Installation of the plastic disc valve



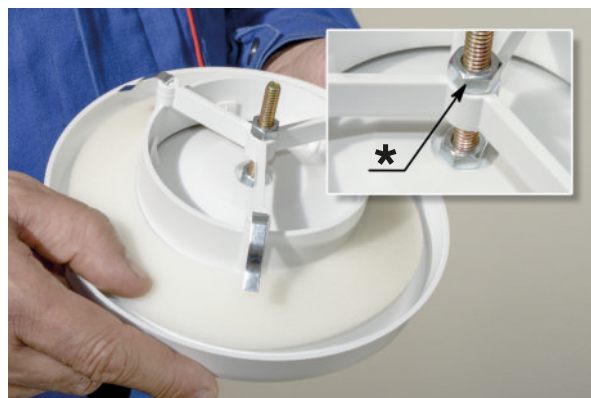
1) Press the plastic disc valve into the anchored ventilation system outlet.



2) Insert the valve as far as it will go towards the ceiling/wall structure.



3) Regulate the air-flow by rotating the central disc, which modifies the valve opening.



4) After adjusting to the required air-flow rate, disassemble the valve by removing it, and lock the central disc using the securing nut*.



Plastic disc air supply valve



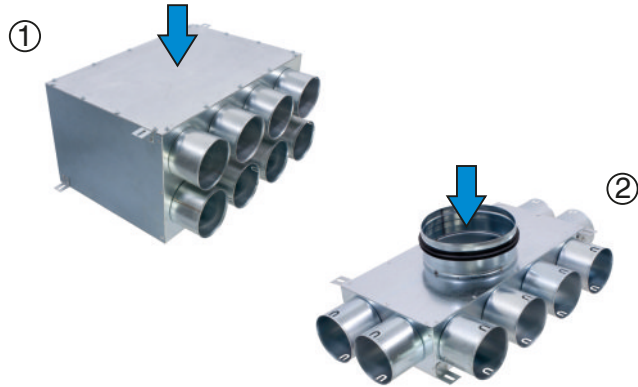
Plastic disc air exhaust valve

5) Re-install the valve and check that it is firmly seated in the structure.

Maintenance and cleaning of air-conditioning systems

Cleaning distribution boxes

Type RT2R and RT3R direct distribution boxes allow inspection and cleaning after removal of the inspection door, figure 1. Type KL flat distribution boxes allow inspection and cleaning following disassembly from the connected ducting, figure 2. Wipe the interior of the box with a damp cloth or carefully vacuum the interior. Proceed carefully to avoid damaging the surface of the interior insulation.



Cleaning KLIMAFLEX SB air-conditioning ducts

The DN 125 cleaning kit is intended for cleaning flexible KLIMAFLEX SB ducting. This kit consists of an attachment, mini-winch (14,5 m) with brush and replacement seals for the mounting frames, figure 7. You must remove all air-conditioning elements from the ducting, e.g. flow regulators, before cleaning. Disconnect the heat recovery unit from the power supply. Access is through the ceiling/wall boxes, or from the other end of the route through the distribution boxes, figure 1 and figure 2.

Procedure through the room exhaust vents: screw the brush firmly onto the end of the mini-winch. Fit the mini-winch bowden to the attachment, guide the brush through the box pipe into the duct by hand. Fit the attachment to the mouth of the pipe and finally insert the narrowed end of the vacuum nozzle** into the attachment opening Ø 35 mm, fig. 4 and 5. Clean the ducting by pulling, after switching the vacuum on.

If cleaning is performed through the distribution box, fig. 6, the vacuum is simultaneously connected to the box pipe attachment at the other end of the ducting route. If a plastic elbow is installed in a DN 75 air-conditioning route, you must perform the cleaning procedure from both ends. From the room vent end and through the distribution box.

We do not recommend use of other types of hard brush (steel, etc.), which could damage the interior surface of the air-conditioning ducting.



Cleaning the disc valves

Remove the valve from the ceiling/wall structure by pressing at the side and sliding it out of the box pipe, figure 3. Remove any dirt using a soft brush, vacuum or water with standard detergent.

Cleaning the interior surface of the ceiling/wall box pipes

After removing the valve, figure 3, you can easily reach into the interior of the box pipe. Clean using a vacuum or a dry cloth.

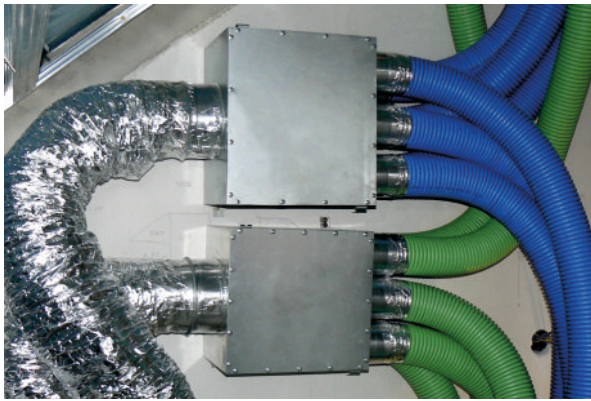
Recommendations

We recommend you contract servicing / maintenance with a qualified professional company during installation of the heat recovery system.

** Tested by vacuum cleaner: power input 1 100 W, maximum suction 270 mbar = 27 kPa.



Project design and execution of construction work including HRV






The advantages of using KLIMAFLEX accessories and pipes




- speed and simplicity of installation
- adaptability to the type of installation
- increased flexibility while retaining mechanical durability
- low weight
- easy modification of pipe length
- anti-bacterial and anti-fungal treatment applied to the interior of the pipe
- low acquisition costs compared to other types of distribution system
- uniform air distribution
- low pressure losses in the pipeline
- sealing rings for connecting the pipes to the boxes are included in the delivery
- no material losses, left-over pipes can be used by inserting a connector




Recommendations:

- the available pressure must be verified on long routes (over 15 m)
- secure connections between the boxes and the pipes using air-tight tape
- recommended maximum air-flow speed up to 3 m/s
- protect the ends of pipes against dust and dirt by fitting end caps (included in the delivery) after installation and before starting operation
- projects and installation should be realised according to the relevant building regulations and guidelines valid at the site of installation
- the maximum distance between anchoring strips when installing beneath the ceiling is 1,000 mm
- condensate removal must be resolved when distributing moist air
- insulate pipeline (insulation thickness 20 mm):
 - a) if the pipeline is used to carry cooled air and leads through a warm room
 - b) if the pipeline leads through a space with a lower temperature than the temperature of the transported air – the heat-loss requirements of the relevant standards (the thermal conductivity of the pipe wall is approx. 0.28 – 0.30 W/mK, thermal resistance is approx. 0.034-0.040 m² K/W)

Air flow rate

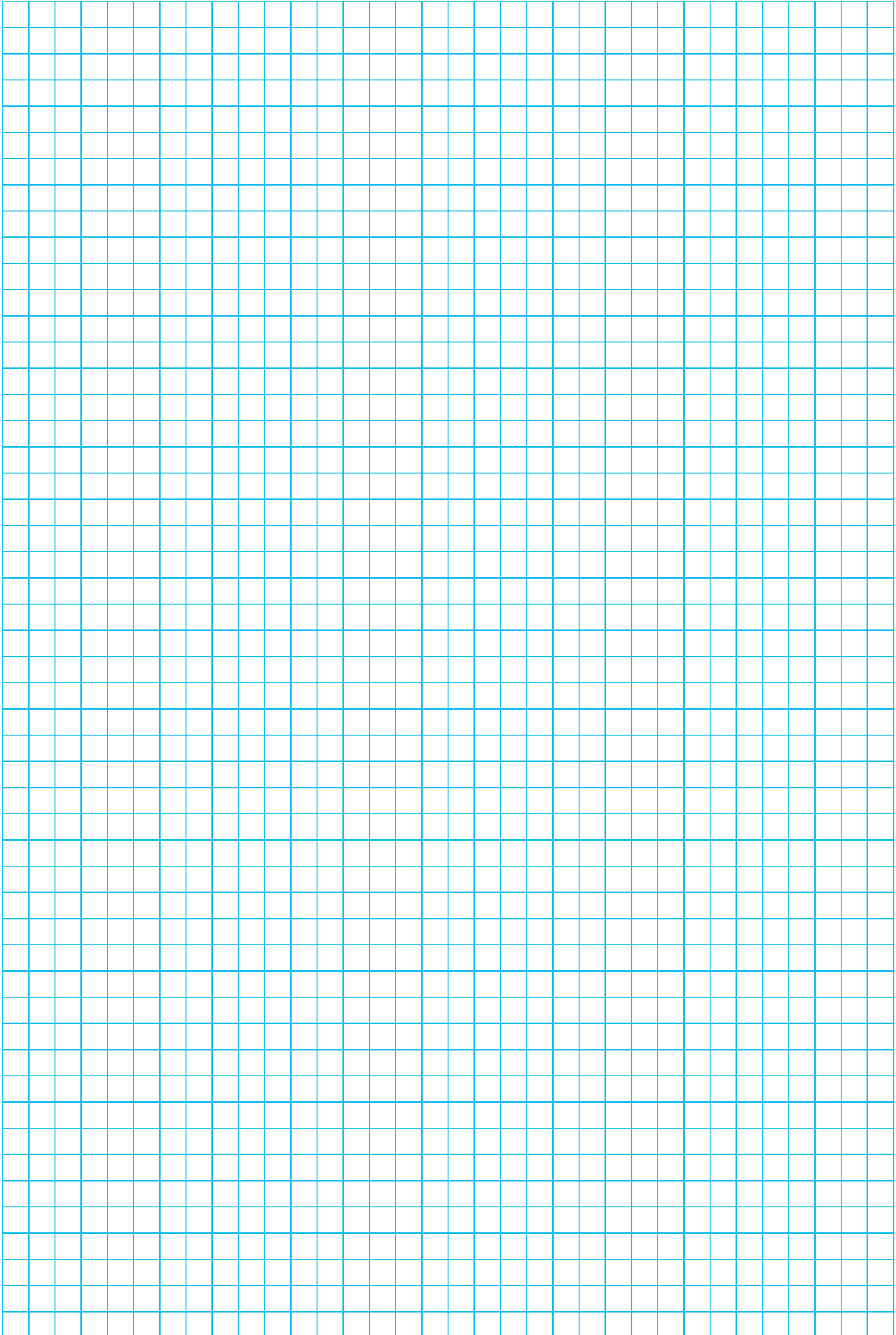
KLIMAFLEX SB DN 63 (m ³ /h)			
Number of tubes	Air flow speed		
	2 m/s	2,5 m/s	3 m/s
	14,7	18,4	22,1
	29,4	36,8	44,2
	44,1	55,2	66,3

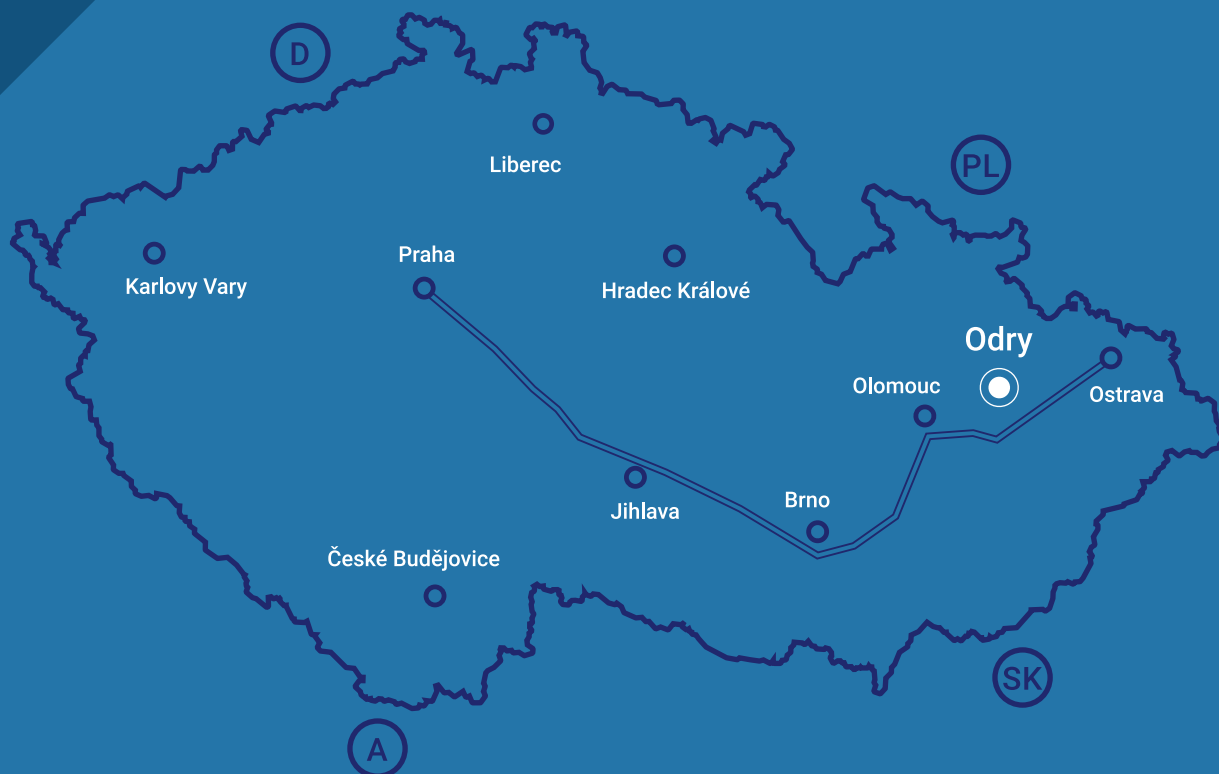
KLIMAFLEX SB DN 75 (m ³ /h)			
Number of tubes	Air flow speed		
	2 m/s	2,5 m/s	3 m/s
	21,7	27,2	32,6
	43,4	54,4	65,2
	65,1	81,6	97,8

KLIMAFLEX SB DN 90 (m ³ /h)			
Number of tubes	Air flow speed		
	2 m/s	2,5 m/s	3 m/s
	31,8	39,8	47,7
	63,6	79,6	95,4
	95,4	119,4	143,1

Housing project "SKY Barrandov" in Prague 5







MATEICIUC a.s.

Ke Koupališti 370/15,
CZ-742 35 Odry
telefon: +420 556 312 411
e-mail: marketing@mateiciuc.cz
www.mat-plasty.com