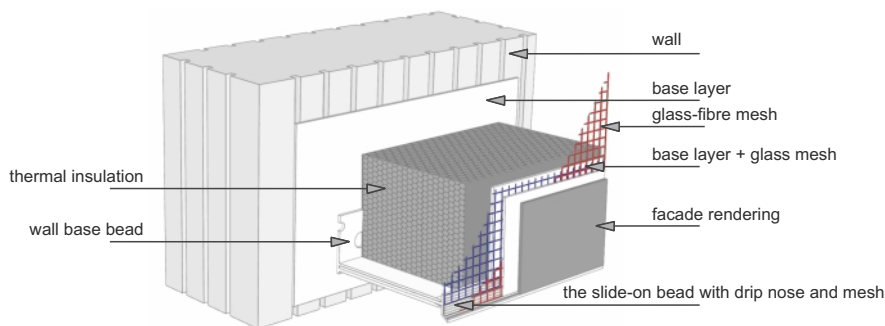


# VARIO base bead set



- structurally and visually perfect seating of thermal insulation boards
- increased mechanical resistance during transport and handling unlike aluminium profiles
- maintenance-free solution and increased UV radiation resistance
- elimination of heat-loss resulting from thermal bridges, unlike similar systems made from steel or aluminium
- the dimensions of the two-piece system can be adjusted to the width of the insulation board by retracting
- reduction of the number of items on stock thanks to the dimensional adaptability of the two-piece solution
- simple level seating of thermal insulation boards
- simple access to fixing holes and elimination of deformation of the base bead when attaching using fixings
- increased strength of the connection to the rendering system using integrated glass-fibre mesh, and subsequent prevention of cracks
- improved runoff of rainwater and prevention of water being absorbed beneath the insulating board as a result of the extended drip nose element
- easy to cut and subsequently handle from the aspect of work

Material	For the width of the insulating mm	Ordering No.	Length m	Packing pcs
PVC	100 - 140	D/45.2	2,0	10
PVC	140 - 180	D/46.2	2,0	10
PVC	180 - 220	D/47.2	2,0	10

## Recommendation:

Before starting to fix the wall base bead to the wall, it is a good idea to verify that the wall is level according to the valid ČSN 732901 standard. Level any unevenness using plastic spacers for example. We recommend that the base beads are attached using fixings at intervals of 30 - 40 cm. Leave a dilation gap of approx. 1-2 mm between the individual base beads. We recommend that the beads be cut diagonally at corners.

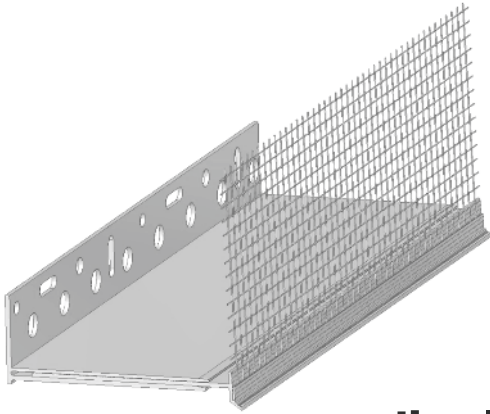
After the first row of thermal insulation board is seated, slide the wall base bead for the second part of the system into the bottom groove – the slide-on bead with drip nose – and butt it to the insulation board. Incorporate the glass-fibre mesh into applied render. When completing the base layer apply the glass-fibre mesh up to the edge of the drip nose profile of the slide-on bead. Pay attention when cutting to avoid damaging the profile or the glass-fibre mesh.

Be careful when hammering in the pins because the properties of the PVC bead material changes if temperatures are below 5°C.

## Storage:

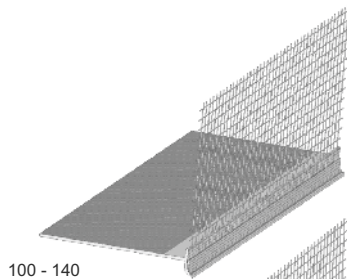
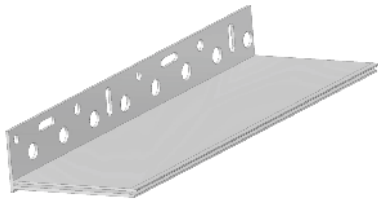
A horizontal storage position is recommended. The profiles need to be stored in a dry place. Maximum recommended storage time is 24 months.

## VARIO base bead set

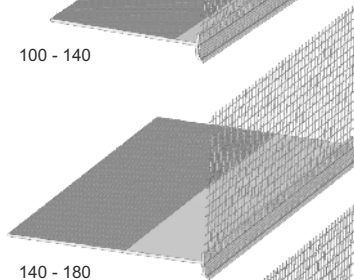


**wall base bead**

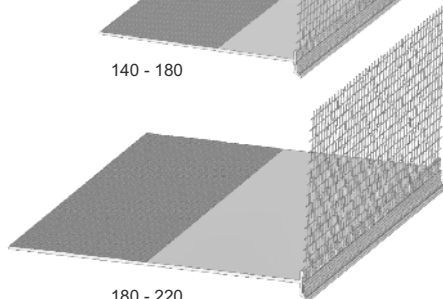
**the slide-on bead with  
drip nose and mesh**



100 - 140



140 - 180



180 - 220